

Space Available: Arcadian Shores Commons

10800 Kings Road, Myrtle Beach, SC 29572



 **Burroughs & Chapin**

COMMERCIAL LEASING & MANAGEMENT

burroughsandchapinleasing.com

JASON ROSENBERGER

843.848.4454

jason.rosenberger@bccompany.com

PATRICK WALSH

843.848.4455

pat.walsh@bccompany.com

Arcadian Shores Commons

10800 Kings Road, Myrtle Beach, SC 29572

 **Burroughs & Chapin**
COMMERCIAL LEASING & MANAGEMENT

US Hwy 22

Tanger Outlets



UNDER ARMOUR



COACH
EST. 1941
NEW YORK



US Hwy 17



Walmart

Arcadian Shores
Commons

ROSS
DRESS FOR LESS

Marshalls

LANE BRYANT

SHOE DEPT.

KIRKLAND'S

AVAILABILITY:

Unit 900: 2,500 SF

LOCATION HIGHLIGHTS:

- Located at the intersection of Highway 17 Bypass and Highway 22
- Ideally located adjacent to Tanger Outlets
- Surrounding tenant mix of national retailers, local shops and casual dining

JASON ROSENBERGER

843.848.4454

jason.rosenberger@bccompany.com

PATRICK WALSH

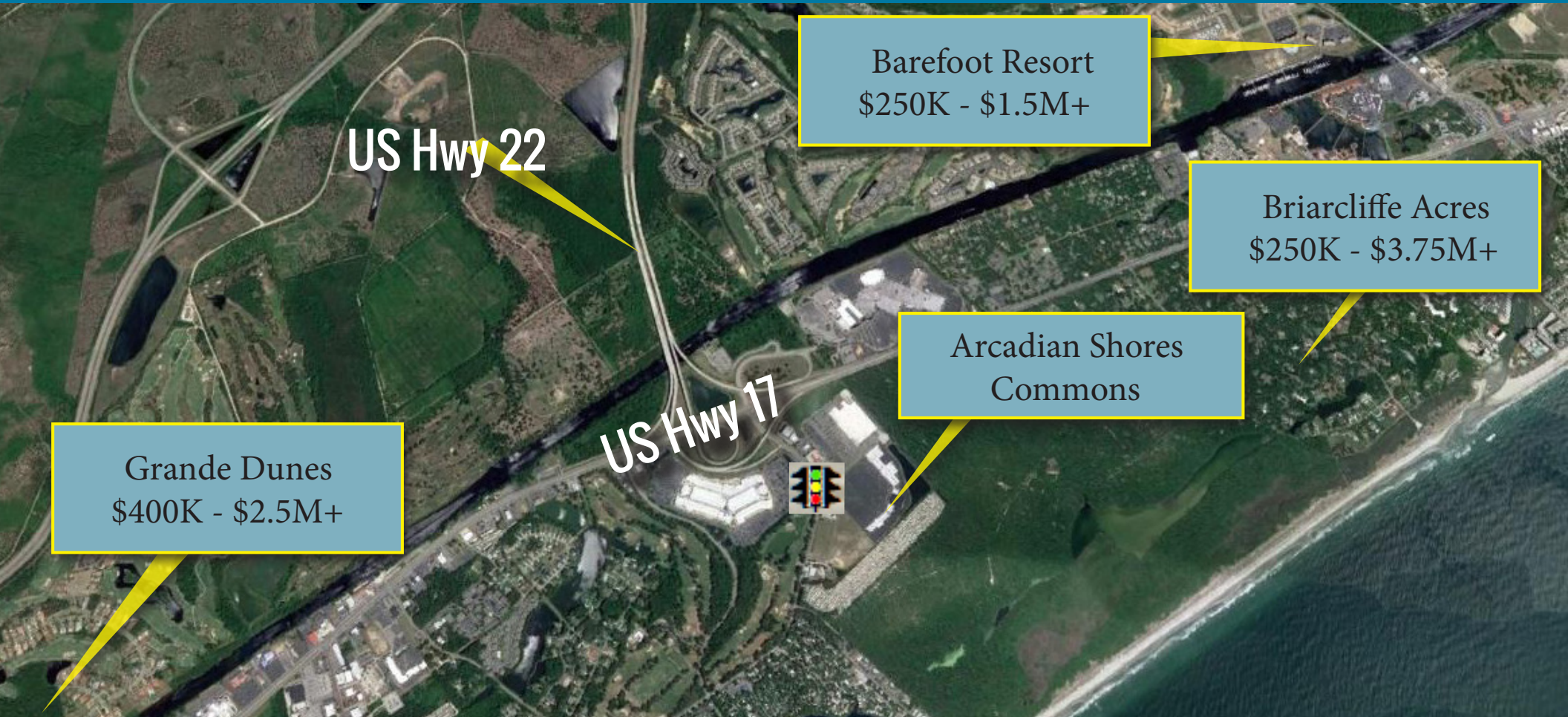
843.848.4455

pat.walsh@bccompany.com

Arcadian Shores Commons

10800 Kings Road, Myrtle Beach, SC 29572

 **Burroughs & Chapin**
COMMERCIAL LEASING & MANAGEMENT



DEMOGRAPHICS

2018 ESTIMATES	TOTAL POPULATION	TOTAL HOUSEHOLDS	AV. HH INCOME
1 MILE	1,418	770	\$107,954
3 MILE	6,790	3,287	\$100,316
5 MILE	20,563	9,830	\$85,974

JASON ROSENBERGER

843.848.4454

jason.rosenberger@bccompany.com

PATRICK WALSH

843.848.4455

pat.walsh@bccompany.com

Arcadian Shores Commons

10800 Kings Road, Myrtle Beach, SC 29572

Unit	Tenant Name	SF+/-
100	Marshalls	30,000
200	Lane Bryant	5,000
220	Burlington Brands	6,650
260	Style Encore	3,000
300	Ross Dress for Less	30,187
400	Kirklands	7,785
460	Lease Pending	4,333
510	Fabric Showcase	5,181
600	The Shoe Dept Encore	27,531
710	Sola Salon Studios	5,407
740	Lease Pending	2,078
900	Available	2,562
910	Manner Finance	1,750
920	Nail Envy	1,736
930	Jonas Marc Style Studio	1,842
935	S&V Laquors	1,750
940	Dollar Tree	10,000
960	Fuji Hibachi	1,292
970	GameStop	1,400
980	Papa John's	1,405
990	Cold Stone Creamery	1,600
1000	McAlister's Deli	3,684



<h2>Arcadian Shores Commons</h2> <p>Lease Plan Horry County, South Carolina</p>	<p>Legend</p> <ul style="list-style-type: none"> Temporary Lease Available 	<p>Burroughs & Chapin COMMERCIAL LEASING & MANAGEMENT</p> <p>8820 Marra Parkway Myrtle Beach, SC 29572 843-448-5123 Ph. www.bc-leasing.com</p>
-------------------------------------------------------------------------------------	---------------------------------------------------------------------------------------------------------------------------------------------------------------------------------------------------------------------------------------------------------------------------------------------------------------------------------------------------------------------------------------------------------	-------------------------------------------------------------------------------------------------------------------------------------------------------------------------------

The information provided on this map is compiled from various sources. Parcel and Centerline Data are courtesy of Local County's GIS Department. This data has not been verified for accuracy and is not guaranteed. The information provided should be used at the user's discretion and for general information purposes only.