

Restaurant Space Available: Palisades Village

7211 N Kings Highway, Myrtle Beach, SC 29572



 **Burroughs & Chapin**
COMMERCIAL LEASING & MANAGEMENT

burroughsandchapinleasing.com

JASON ROSENBERGER

843.848.4454

jason.rosenberger@bccompany.com

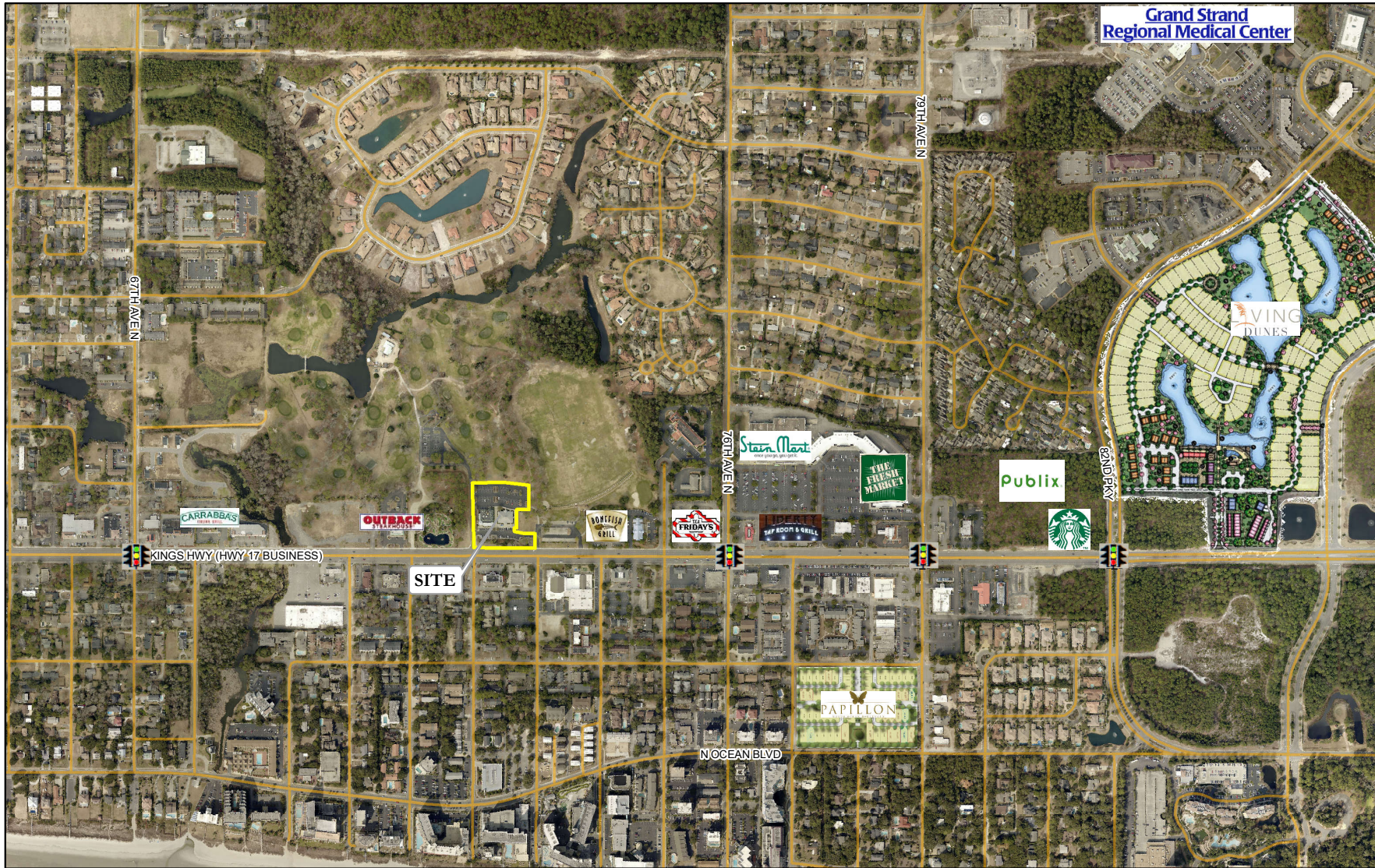
PATRICK WALSH

843.848.4455

pat.walsh@bccompany.com

Palisades Village

7211 N Kings Highway, Myrtle Beach, SC 29572

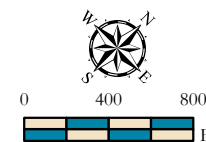


Palisades

Vicinity Map

Myrtle Beach,
South Carolina

Surrounding Residential Developments				Surrounding Residential Developments			
Residential Development	# Lots/ Units +/-	# Existing Homes +/-	Median Price	Residential Development	# Lots/ Units +/-	# Existing Homes +/-	Median Price
The Dunes	390	340	\$600,000	Papillon	61	5	\$500,000
Grande Dunes	900	550	\$750,000	Del Webb	785	5	\$325,000
Living Dunes	200	10	\$500,000				

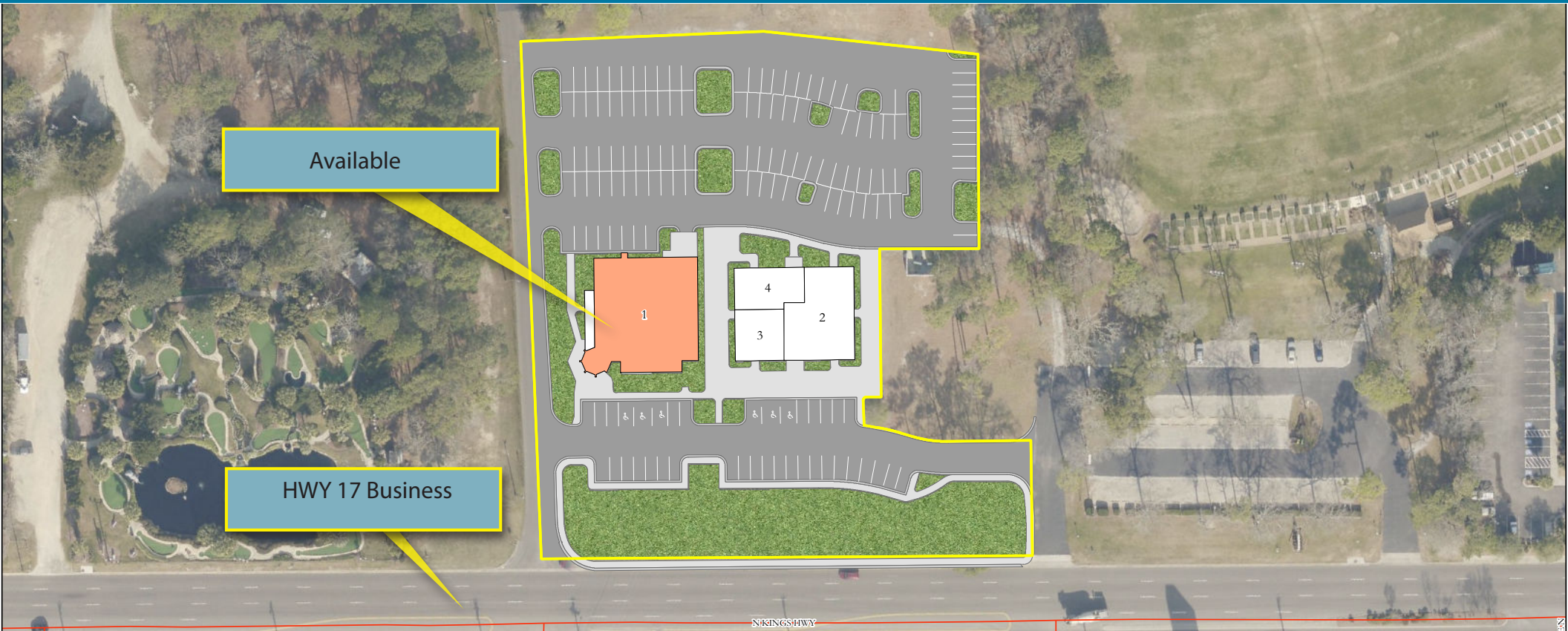


Burroughs & Chapin
8800 Marina Parkway
Myrtle Beach, SC 29572
843-448-5123 Ph.
www.burroughschapin.com

The information provided on this map is compiled from various sources. Parcel and Centerline Data are courtesy of Local County's GIS Department. This data has not been verified for accuracy and is not guaranteed. The information provided should be used at the user's discretion and for general information purposes only.

Palisades Village

7211 N Kings Highway, Myrtle Beach, SC 29572



AVAILABILITY:

Unit 1:
Interior: **6,590 SF**
Covered Patio: **800 SF**

LOCATION HIGHLIGHTS:

- Prime frontage on Highway 17 Business between 71st - 76th Avenues North
- 18+ million visitors per year to the Myrtle Beach MSA
- Affluent residential community

DEMOGRAPHICS

2018 ESTIMATES	TOTAL POPULATION	TOTAL HOUSEHOLDS	AVG. HH INCOME
1 MILE	5,065	2,624	\$85,578
3 MILE	18,950	9,066	\$87,033
5 MILE	35,553	15,799	\$81,723

JASON ROSENBERGER

843.848.4454

jason.rosenberger@bccompany.com

PATRICK WALSH

843.848.4455

pat.walsh@bccompany.com